



HEAVY DUTY INDUSTRIAL VENTILATION SOLUTIONS



ELDRIDGE FAN

ELDRIDGE INDUSTRIAL FAN

Our fan is ideal for all industrial applications. It is a robust, cost-effective fan that exceeds industry needs and standards.

Our fans are backed by solid engineering. Each size was analyzed using the latest in engineering software technology and testing.

SIZES

US STANDARD: 18" through 60" with ranging performance up to 68,200 CFM and standard pressures up to 0.5" SP
Higher pressures available

HOUSINGS

Constructed of heavy gauge carbon steel
SP-10 sandblasted to a near white finish
Powder-coated with super durable polyester coating

PROPELLERS

Axial blades with efficient airfoil shape
Pressure die-cast aluminum hubs and adjustable pitch blades
Balanced in accordance with ISO Standard 1940 G 6.3
Tested in accordance with AMCA standard 210
Superior low noise levels

DIMENSIONS

Size	A	B	C	D	E	F	G	H
18	18 7/8	22 7/16	21 1/8	12	9/16	9	10 GA	10 GA
24	24 7/8	29 7/16	27 5/8	12	9/16	9	10 GA	10 GA
30	30 7/8	35 7/16	33 5/8	12	9/16	9	10 GA	10 GA
36	37	41 9/16	39 3/4	12	9/16	12	7 GA	7 GA
42	42 7/8	47 7/16	45 5/8	12	9/16	12	7 GA	7 GA
48	49 1/8	54 15/16	52 3/4	12	9/16	14	1/4	1/4
54	55 3/8	61 3/16	59	12	9/16	14	1/4	1/4
60	61 3/8	67 3/16	65	12	9/16	14	1/4	1/4

PERFORMANCE

Size	Motor		Peak	CFM @ S.P.					Noise Level
	HP	RPM		0"	.125"	.25"	.375"	.5"	
18	1	1750	0.99	5970	5660	5330	4960	4550	71
24	2	1750	1.99	10500	10000	9530	9000	8440	73
30	5	1750	3.75	18300	17500	16700	15900	14900	78
36	5	1160	4.69	24599	23500	22500	21400	20200	77
42	5	1160	4.84	30300	28800	27100	25300	23300	80
48	7.5	1160	6.98	38700	37300	35800	34100	32300	87
54	10	870	9.94	49400	47600	45700	43900	41900	87
60	15	870	14.6	68200	65900	63600	61200	58800	88

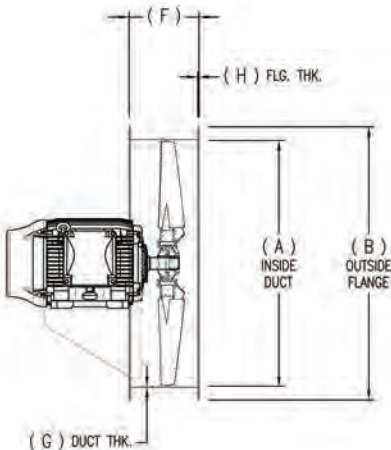
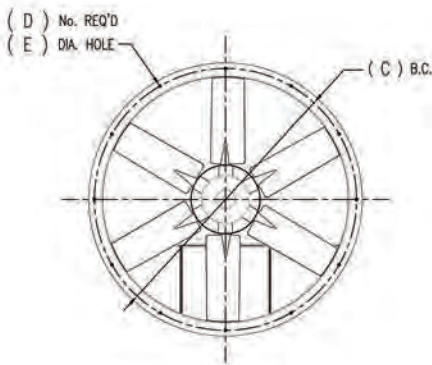
Note: Noise Levels are estimated dBA @ 5'. dBA values are average hemispherical and should be used as a guideline only.



MOTORS

TEFC motor
60/50 Hz

HAZARDOUS DUTY OPTIONAL
Explosion-proof NEMA/IEC
Motor voltages to match
specific requirements



E-HIVE HOOD

Our weather-proof hood surpasses any other ventilation hood on the market. It's lighter, it has a smaller footprint, it keeps out more rain, and is suitable for 100mph wind loads.

We put our E-Hive Hood through rigorous testing to ensure the highest quality hood for a competitive price. Our hoods are built to complement our Eldridge Industrial Fans perfectly, but they can also be used to replace hoods with existing competitors' fans.

HOUSINGS

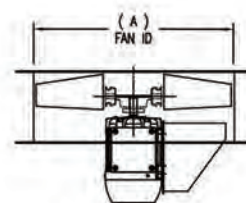
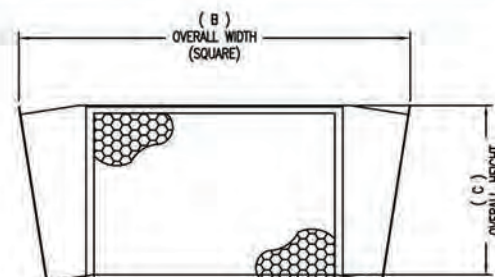
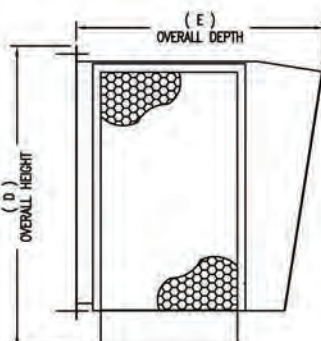
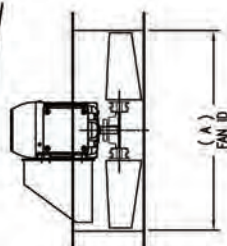
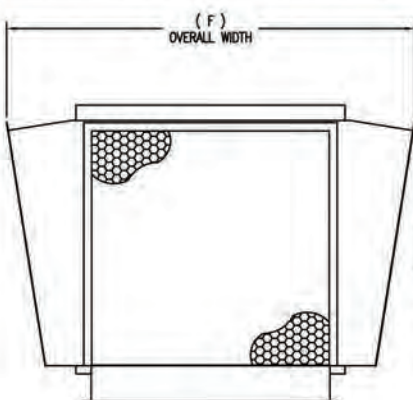
Constructed of 14 ga. carbon steel
Powder coated with super durable polyester coating
Louvers constructed of ultra-durable, UV-protected plastic that meets CTI Standard 136
Minimal pressure drop
Environmentally friendly assembly

SIZES

Constructed to complement our fan in US STANDARD sizes 18" through 60" with ranging performances to complement each fan size.

WALL HOOD DIMENSIONS

Size	A	D	E	F	Est. Weight
18	18 7/8	42 7/16	30 5/8	25 3/4	90
24	24 7/8	51 5/8	37 5/8	30 7/8	125
30	30 7/8	58 1/2	43 5/8	39 13/16	170
36	37	67 3/8	49 5/8	42 3/4	195
42	42 7/8	75 1/4	55 5/8	41 11/16	230
48	49 1/8	85 3/4	63 5/8	48 15/16	300
54	55 3/8	93 5/8	69 5/8	53 7/8	345
60	61 3/8	101 1/2	75 5/8	63 13/16	425



ROOF HOOD DIMENSIONS

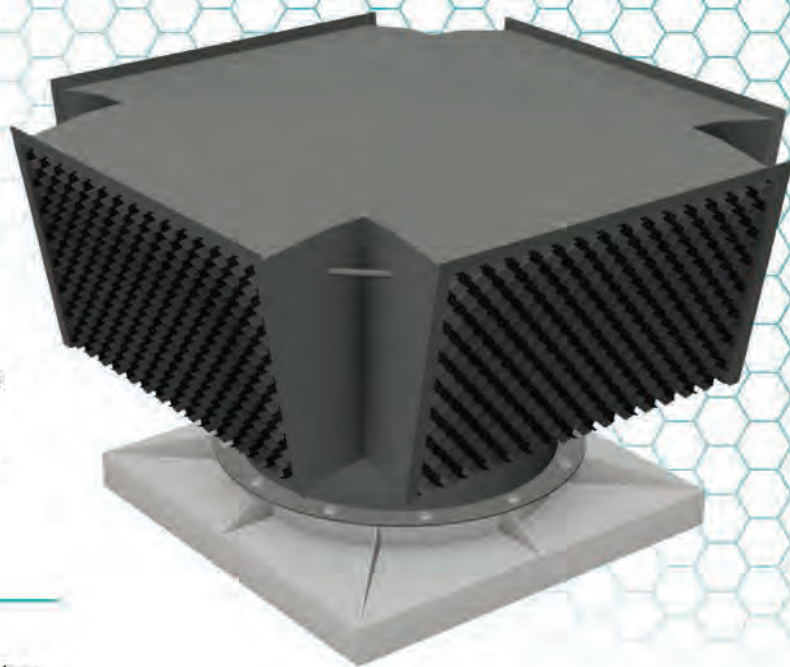
Size	A	B	C	Est. Weight
18	18 7/8	40 3/16	16 1/8	90
24	24 7/8	48 3/4	21 1/8	120
30	30 7/8	56 15/16	28 1/8	160
36	37	64 3/16	32 1/8	200
42	42 7/8	70 3/16	32 1/8	225
48	49 1/8	79 3/4	37 1/8	285
54	55 3/8	87 5/16	42 1/8	340
60	61 3/8	96 7/16	52 1/8	415

THE E-HIVE HOOD CAN:

✓ Withstand up to **6 inches of rain per hour**

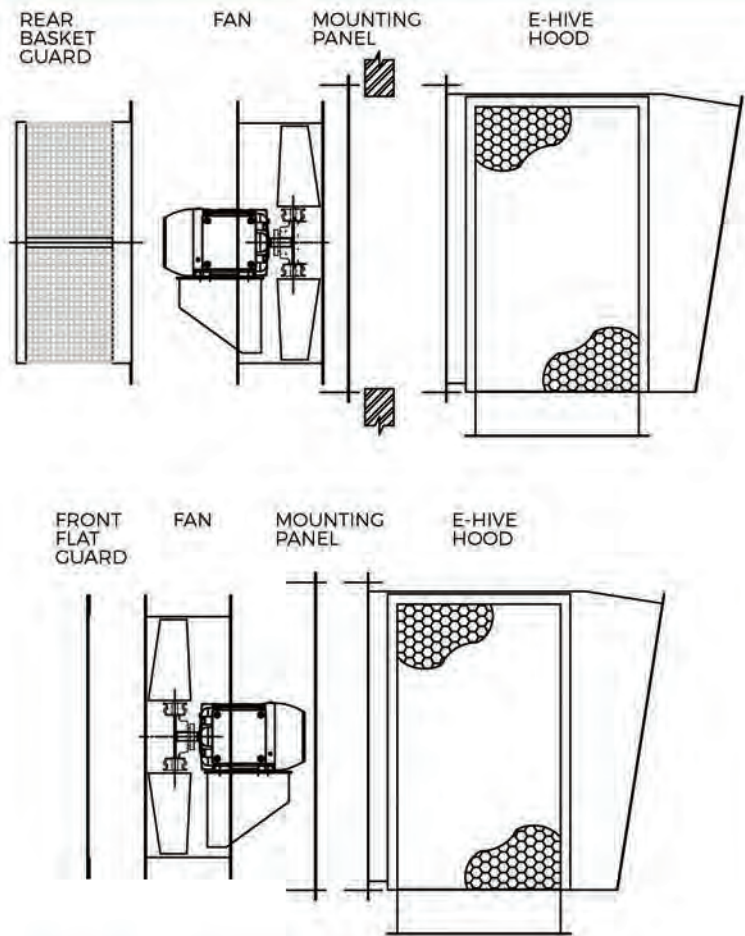
✓ Withstand **wind speeds up to 100 mph**

✓ Keep your facilities dry where other hoods fail

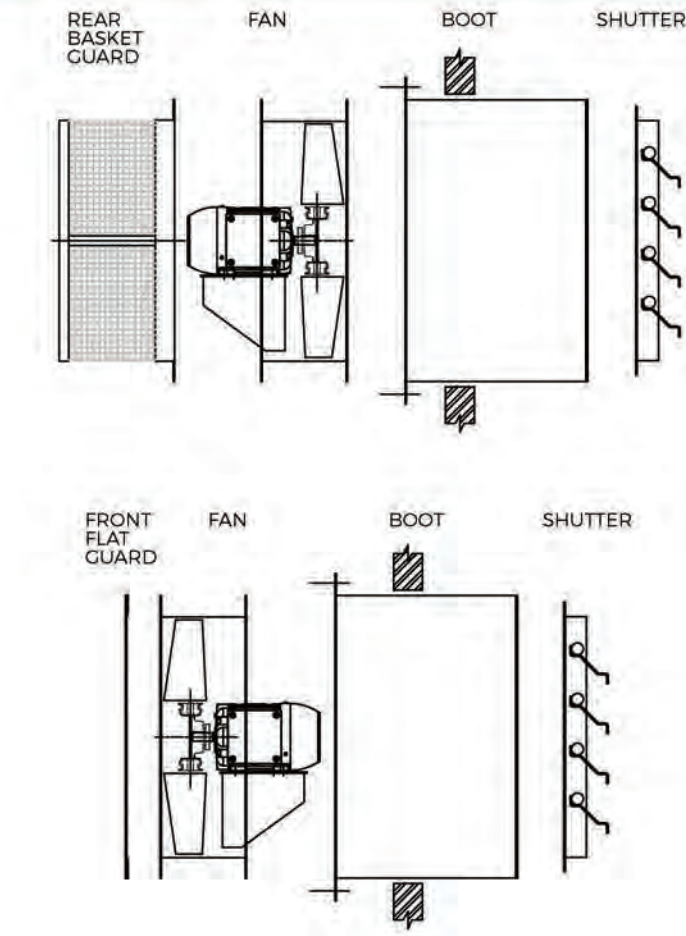


ARRANGEMENT CONFIGURATIONS

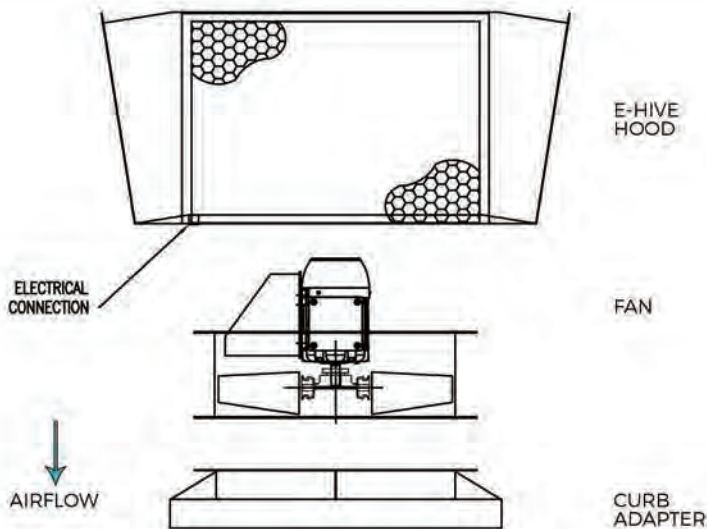
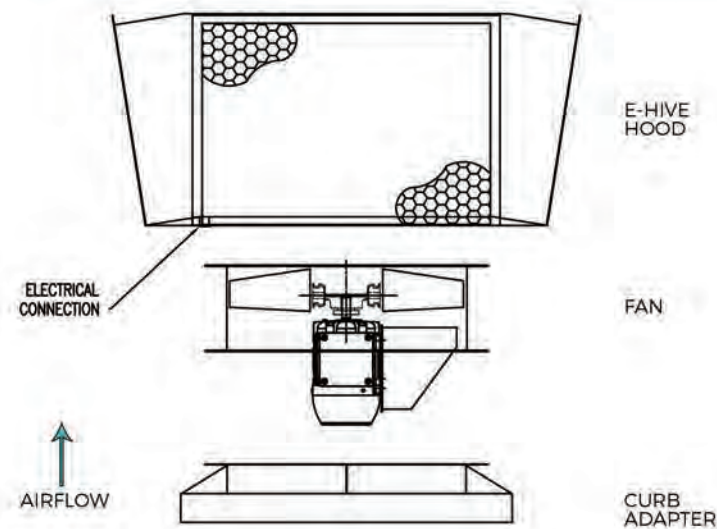
WALL HOOD



SHUTTER

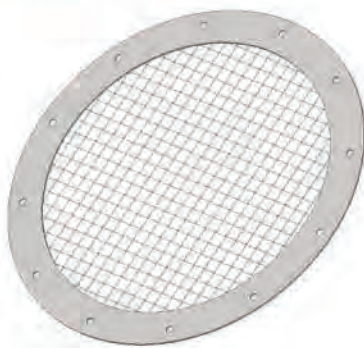


ROOF HOOD



ACCESSORIES

FLAT GUARD



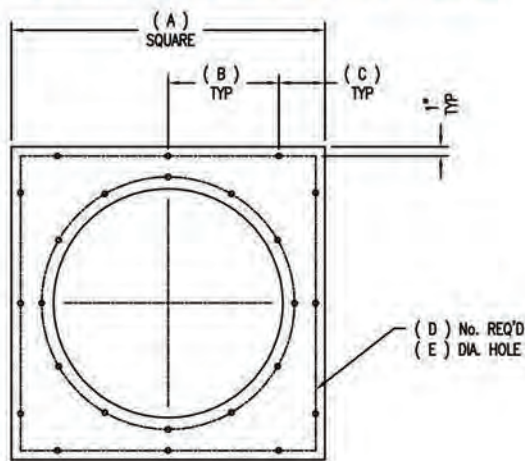
- Our guards are specially built to fit with our Eldridge Industrial Fans.
- Constructed of steel, they will be in place for the long term to keep your work environment safe.
- The basket guard is 20" deep (subject to change based on fan performance and customer requirements).

BASKET GUARD



Note: Fans must have guards when mounted less than seven (7) feet above the floor or worker access to meet OSHA requirements.

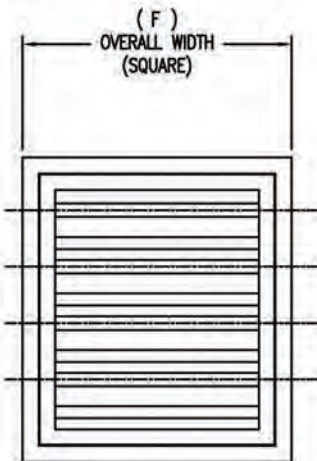
MOUNTING PANEL



MOUNTING
PANEL
DIMENSIONS

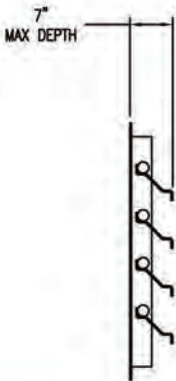
Size	A	B	C	D	E
18	27	9	4 1/2	9/16	8
24	34	12	5	9/16	12
30	40	15	5	9/16	12
36	46	12	5	9/16	16
42	52	14	5	9/16	16
48	60	17	4.5	9/16	16
54	66	19	4.5	9/16	16
60	72	21	4.5	9/16	16

SHUTTER



SHUTTER
DIMENSIONS

Size	F
18	23
24	30
30	36
36	42
42	48
48	56
54	62
60	68



All our fans and accessories are based on 70 years of industrial ventilation experience. We have taken the guess work out of the equation—we know you will be pleased using our Eldridge Industrial Fan for your all your applications.

SERVICES

Fluid Flow Systems Analysis
System Design
Equipment Specification

On-Site Ventilation Surveys
Heat Load Evaluations
Acoustic Evaluations

Installation and Start-Up
Project Support and Management

WE PUT CREATIVE THOUGHT INTO MACHINERY SPACE VENTILATION

Eldridge has been in business since 1946 and has a proven track record of exceeding customer expectations. Our design team has managed projects across the United States and across the world. We have the experience necessary to ensure our customers' success.

We aim to create long-lasting relationships with our customers. Our customers have come to rely on us as an integral part of their valued resources. We look forward to providing the same service to your company in the near future.

ADDITIONAL RESOURCES

Visit our website for more information: www.eldridgefan.com
Ventilation and Noise Control articles available at blog.eldridgefan.com



www.eldridgefan.com

23035 Elkana Deane Ln.
Katy, TX 77449
T: +1 713-780-7200
Toll-free: +1 844-780-7200

HDIVS-A-001 August